

U.S. Environmental Protection Agency

## Burlington Industries Cheraw

Cheraw, South Carolina



## Fact Sheet

Number 4

May, 2019

### Introduction

This fact sheet contains information about the Burlington Industries Cheraw site (the Site). The United States Environmental Protection Agency is committed to engaging the community in Cheraw. This fact sheet provides a description of the Site, current status of the removal action, and planned activities to address environmental conditions.

### Site Location and Description

The Burlington Industries Cheraw site consists of the former Burlington Industries, Inc. facility property, 3.2 miles of surface water drainage from the facility to the Great Pee Dee River and a number of adjacent parcels along the surface water pathway. Part of the former Burlington Industries facility is currently owned by Highland Industries, Inc. Adjacent properties to the surface water drainage corridor include 37 occupied private residences and public lands including Huckleberry Park.

During the South Carolina Department of Health and Environmental Control's (DHEC's) investigation of a residential property, polychlorinated biphenyls (PCBs) were found in surface soils. This residential property, along with other area parcels, were formerly owned by Burlington Industries. PCBs are toxic and persistent contaminants that pose a significant threat to human health and the environment. Subsequent sampling events found PCBs in surface and subsurface soils of adjacent residential lots, the former Burlington Industries facility property, sediments along the surface water corridor, and public and private properties downstream. Based on the high concentrations of PCBs at the Site, DHEC requested that the EPA Region 4 Emergency Response, Removal and Prevention Branch (ERRPB) conduct a Removal Site Evaluation (RSE).

### Previous Investigations

The EPA signed an action memorandum on April 25, 2017, to begin a time-critical removal action at the Site. The action addressed contaminated surface soils at 14 residential properties. Soils which exceeded EPA's cleanup criteria were removed and transported to an approved disposal facility. Clean soil was returned to residential properties and vegetative ground cover was added to prevent erosion. The EPA also removed play structures and sand from Huckleberry Park, which has been closed since August of 2016.

The EPA signed an Administrative Order on Consent (AOC) with Highland Industries which went into effect on October 23, 2017. After a planning and assessment period, removal work under the AOC began on August 6, 2018 with excavation of contaminated soil at Huckleberry Park. Excavation work at the park was completed and clean backfill was installed prior to the arrival of Hurricane Florence. Removal of contaminated soil at the Highland property began on October 1, 2018 and excavations outside the ditch were completed in February 2019. The final phase of removal work under the AOC includes excavation and restoration of the drainage ditch from the Highland property to the end of Pecan Drive. Excavation work in the ditch began on January 28, 2019 and progress downstream has been delayed to address previously unknown high concentrations of PCBs that were discovered below the ditch. Contaminated soils were measured at depths greater than 14-feet below ground surface and significant excavation work is being undertaken to address these areas. In March 2019, soil core samples were collected along the center of the ditch banks of the ditch; these samples show that the deepest contamination is in ditch segments adjacent to the former Burlington Industries facility. These areas are already being addressed under the current removal work.

Following Hurricanes Florence and Michael, the EPA ordered sampling in Huckleberry Park and collected samples from 25 residential yards and samples from creek sediment that was removed from Wilson Branch. Results from samples in the park and creek sediment were below the cleanup goals that have been established for the Site. Results in most residential lawns were also below the cleanup goals that have been established for the Site. PCBs were found in four lawns that were previously cleaned in 2017; the EPA arranged to remove the contaminated sod and replace it with clean sod. One additional yard which was not previously cleaned in 2017 was found to have soil that exceeded the EPA's criteria for conducting a removal action. Soils which exceeded EPA's cleanup criteria were removed and transported to an approved disposal facility. Clean soil was returned to residential property and vegetative ground cover was installed.

Samples collected after Hurricane Florence identified PCBs inside four residences that were flooded during the storm. In response to these results, the EPA initiated an emergency response on September 25, 2018 to remove sediment from the interior of the four residences. The emergency response was completed on October 3, 2018 and displaced occupants returned to their homes.

## Future Activities

The EPA determined that the Burlington Industries Cheraw site qualifies for inclusion on EPA's National Priorities List (NPL). In consultation with DHEC, EPA listed the Site to the NPL on May 17, 2018. Superfund is the EPA program that addresses hazardous waste sites like Burlington Industries Cheraw. The NPL is a list of serious uncontrolled or abandoned hazardous waste sites identified for investigation and comprehensive long-term cleanup. The NPL guides EPA in determining which sites warrant further assessment of the nature and extent of public health and environmental risks. Adding the Site to the priority list will allow EPA to use Superfund authorities and additional resources to determine the extent of contamination along the surface water pathway, including whether additional properties are impacted by PCBs, and to perform additional cleanup if necessary.

EPA has prepared a draft Statement Of Work and is preparing to commence negotiation of an Remedial Investigation/Feasibility Study (RI/FS) Administrative Order by Consent (AOC). The RI/FS is a mechanism

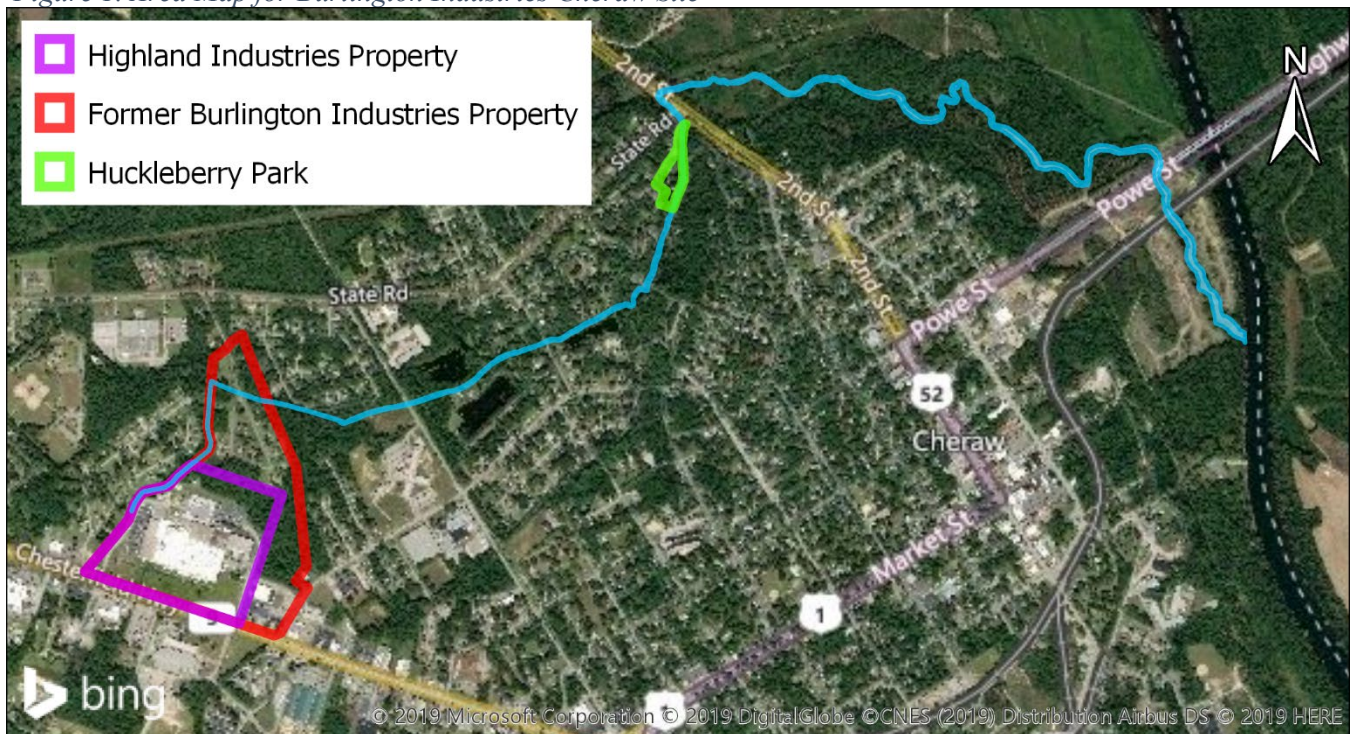
for collecting data to characterize Site conditions, assess risk to human health and the environment, evaluate treatment technologies, and evaluate the options for remedial actions. All known high concentrations and sources of PCBs in the environment have been addressed by the removal and emergency response actions taken by EPA and the consent agreement with Highland Industries, Inc. The RI/FS will seek to evaluate presence and options for remedial action to address remaining PCBs in the environment including additional residential properties downstream, undeveloped properties, downstream tributaries, ponds, creeks, wetlands, and the Pee Dee River.

Updates on progress with the RI/FS and other tasks related to the remedial process for the Burlington Industries Cheraw Site will be published to the site webpage at:



[epa.gov/superfund/burlington-cheraw](http://epa.gov/superfund/burlington-cheraw)

Figure 1. Area Map for Burlington Industries Cheraw Site



## FOR MORE INFORMATION

### **EPA Remedial Project Manager**

Jeff Crowley 404-562-9587

[Crowley.Jeffery@epa.gov](mailto:Crowley.Jeffery@epa.gov)

### **EPA National Priorities List**

#### **Coordinator**

Cathy Amoroso 404-562-8637

[Amoroso.Cathy@epa.gov](mailto:Amoroso.Cathy@epa.gov)

### **EPA Community Involvement**

#### **Coordinator**

Stephanie Brown

404-562-8450

[Brown.StephanieY@epa.gov](mailto:Brown.StephanieY@epa.gov)

### **Information Repository**

Matheson Memorial Library

227 Huger Street

Cheraw, South Carolina 29520